

# Magply

**Timber Frame**

**Render Systems**

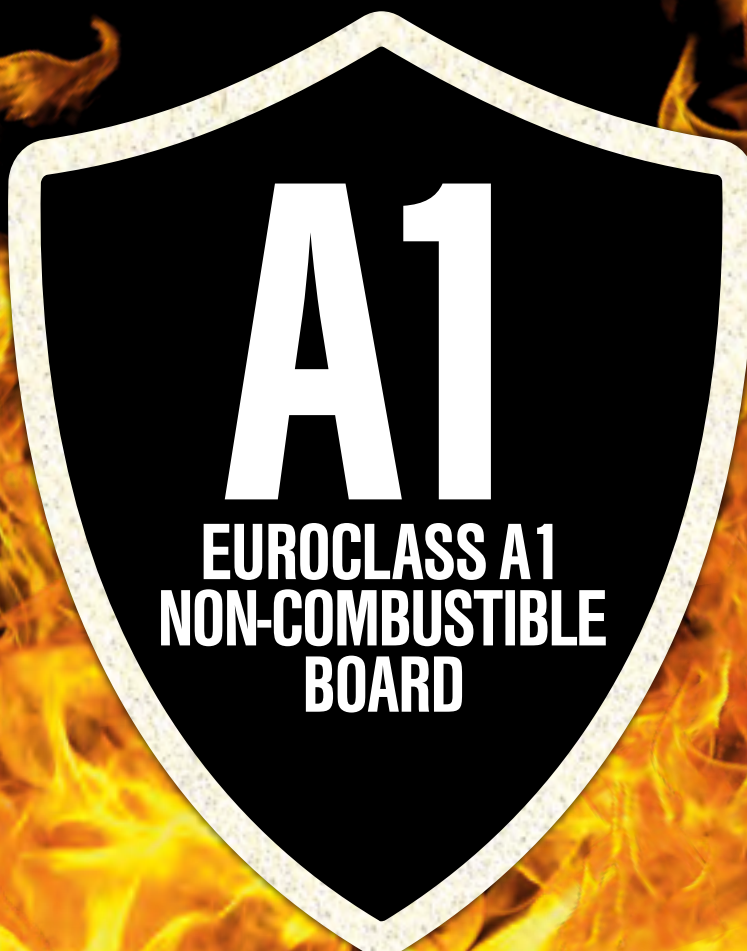
**Steel Frame Systems**

**Rainscreen Cladding**

**Modular Build**

**Spandrel Panels**

**SIP Panels**



EUROCLASS A1  
PERFORMANCE



ETA 17/0976



MOISTURE  
PROTECTION



STRONG AND  
EASY TO USE



ENVIRONMENTALLY  
FRIENDLY



BREATHABLE



MOULD  
RESISTANT



LOW CHLORIDE  
CONTENT



SOUND  
REDUCTION



CLASS 0

# TIMBER FRAME (Rockwool)

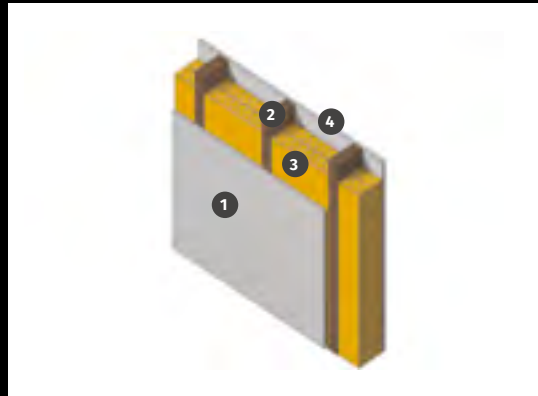
STANDARD: BS 476: PART 22: 1987 | TEST DATE: 19<sup>th</sup> JUNE 2015

**91**  
MINUTES

INTEGRITY

**86**  
MINUTES

INSULATION



- 1 9mm Magply
- 2 38mm x 140mm Section
- 3 2 x Layers Rockwool
- 4 15mm Gyroc Fireline

# TIMBER FRAME (PIR)

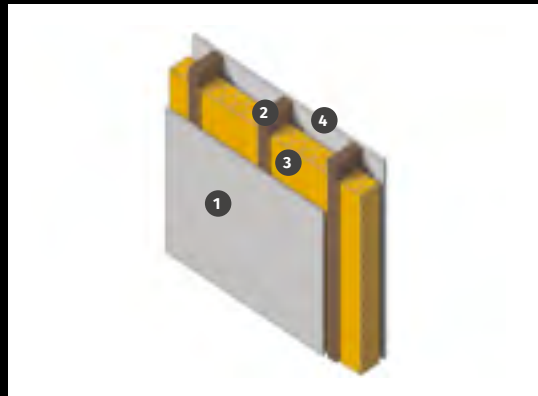
STANDARD: BS EN 1364 - 1 2015 | TEST DATE: 19<sup>th</sup> JUNE 2015

**75**  
MINUTES

INTEGRITY

**66**  
MINUTES

INSULATION



- 1 9mm Magply
- 2 38mm x 140mm Section
- 3 110mm Polyisocyanurate
- 4 15mm Knauf Fire Panel

# SPANDREL PANEL (UN-INSULATED)

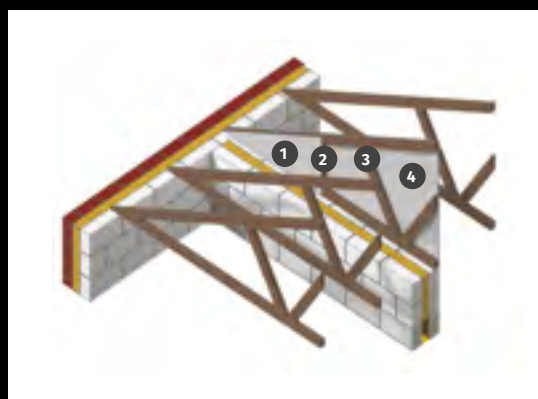
STANDARD: BS 476: PART 22: 1987 | TEST DATE: 17<sup>th</sup> FEBRUARY 2018

**132**  
MINUTES

INTEGRITY

**61**  
MINUTES

INSULATION



- 1 12mm Magply
- 2 100mm Cover Strip
- 3 38mm x 89mm Section
- 4 12mm Magply



# LOAD BEARING WALL

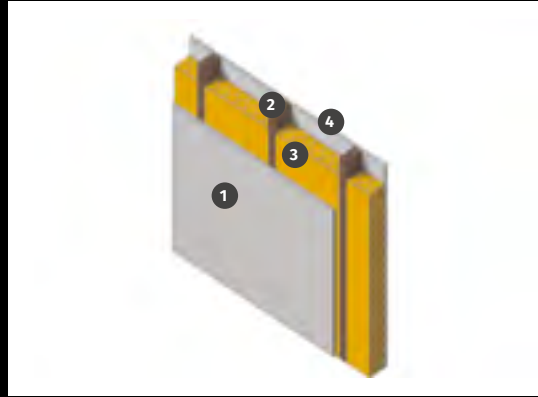
STANDARD: BS EN 1365-1: 2012 | TEST DATE: 6<sup>th</sup> OCTOBER 2016



INTEGRITY



INSULATION



- 1 9mm Magply
- 2 38mm x 90mm Section
- 3 Knauf Insulation
- 4 9mm Magply

# STEEL FRAME PARTITION

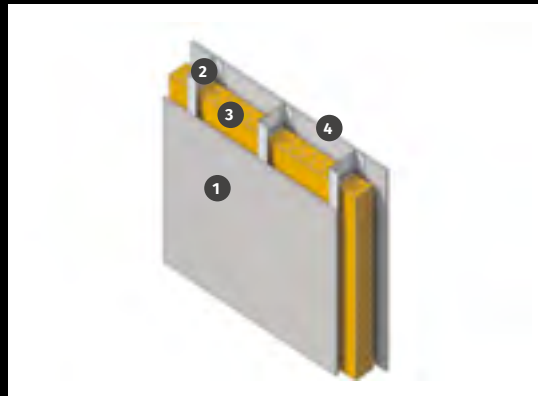
STANDARD: BS EN 1364 - 1 2015 | TEST DATE: 31<sup>st</sup> MARCH 2017



INTEGRITY



INSULATION



- 1 9mm Magply
- 2 70mm x 32mm Section
- 3 70mm Mineral Wool
- 4 9mm Magply

# SPANDREL PANEL

STANDARD: BS476 Part 22:1987 Clause 5 | TEST DATE: 17<sup>th</sup> AUGUST 2017



INTEGRITY



INSULATION



- ▶ 12mm Magply
- ▶ 38mm x 89mm Section
- ▶ 50mm Cavity
- ▶ 38mm x 89mm Section
- ▶ 12mm Magply



# EXTERNAL CLADDING

STANDARD: EN 13501-1:2007 A1: 2009 | TEST DATE: 14<sup>th</sup> JUNE 2016



**A1 CLASSIFICATION  
OF REACTION TO FIRE  
PERFORMANCE**

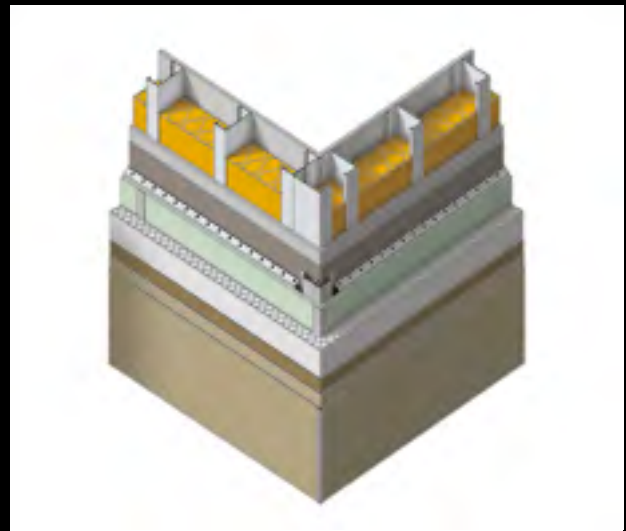


In line with the Building Control Alliance Technical note 18; 'use of Combustible Cladding Materials on residential buildings paragraph 12.7 of AD B2' - use materials of limited combustibility throughout the cladding system.

## RENDER APPLICATIONS

Magply has been specially formulated for render systems to achieve a strong key between polymer basecoats and top coats. The board structure provides high tensile strength for long term durability and is used to form the external facades of commercial & domestic projects which utilise steel or timber frame structures.

Magply provides a strong, lightweight structure which can be erected in a fast, efficient manner for the external render system. Render suppliers named below have extensively tested and approved Magply as a suitable substrate but if a render other than those listed is chosen the applicator should test to ensure compatibility before deciding to proceed. Please contact Magply or the render manufacturer to discuss the relevant specification, this will include board preparation and fixing advice which may differ from one render supplier to another.



**PAREX**  
Building expertise, together

 **MAPEI**

 **K Rend**

 **3au**



# Introduction

The Magply Euroclass A1 board can be used as a fire mitigation sheathing board for Timber Frame, Steel Frame, Rainscreen Cladding, SIP Panels, Spandrel Panels and Modular Build.

Magply features a Magnesium Oxide formulation which is manufactured from a production process that ensures a very low chloride content enhancing both stability and durability. Magply carries internationally recognised accreditations confirming the boards' ability to deliver fire integrity, racking strength, impact and pull-out resistance.



Thickness (mm)	Width (mm)	Length (mm)	Weight (kg.m <sup>2</sup> )	Weight per board	Surface m <sup>2</sup>
9	1200	2400	9.94	28	2.88
		2700		32	3.24
		3050		36.4	3.66
		2440		29	2.98
12	1200	800	13.19	13	0.96
		2400		38	2.88
20	1200	2400	21.88	63	2.88

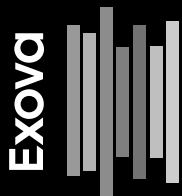
<b>Thermal Conductivity</b>	0.19 W/mK
<b>Fire Classification</b>	Class 0 Euroclass EN13501* A1 (Non-Combustible)
<b>Reaction to Fire</b>	Passed BS EN 1716 Reaction to Fire* Passed
<b>Appearance</b>	Solid flat sheet board
<b>Colour &amp; Odour</b>	White, Odourless Change of State None
<b>Vapour Resistance</b>	Vapour Resistance 0.31 MNs/g (EN ISO 12572*)
<b>Melting point</b>	Melting point: 2400°C
<b>Vapour pressure</b>	EN ISO 12572: 2016 = 0.31 MNs.g-1.
<b>pH level</b>	pH level: 7.5
<b>Solubility</b>	Solubility: Insoluble in Water
<b>Acoustic</b>	9mm Rw 28dB 12mm Rw 29dB 20mm Rw 31dB EN ISO 717-1:2013

**For more information on testing please contact the Magply Technical line: 01621 776 252**



# Magply

TESTED & CERTIFIED BY



LUCIDEON  
insight creating advantage



FOR MORE INFORMATION

[www.magply.co.uk](http://www.magply.co.uk)

01621 776252 | [sales@magply.co.uk](mailto:sales@magply.co.uk)